



Oilmax

OILMAX GEAR PUMP



Use *Oilmax*
Save Environment

Features :

- ◆ Face Mounted
- ◆ Self Aligning
- ◆ Low Noise
- ◆ Hardened Shaft & Gears
- ◆ Single Piece Gear Construction
- ◆ Inbuilt Pressure Relief Valve

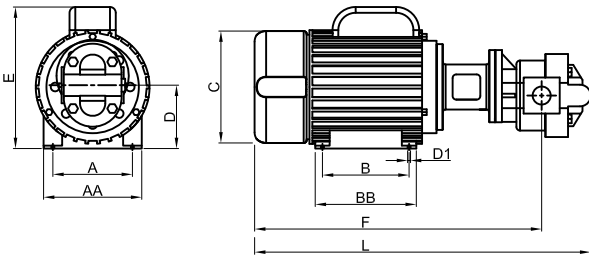
Applications :

- ◆ Cutting Oil
- ◆ Hydraulic Oil
- ◆ Gear Oil
- ◆ Engine Oil
- ◆ Furnace Oil
- ◆ Bio Diesel / WVO
- ◆ Anti Rust Oil
- ◆ Cement Plants
- ◆ Filtration Equipments
- ◆ Test Equipments
- ◆ Machine Tools

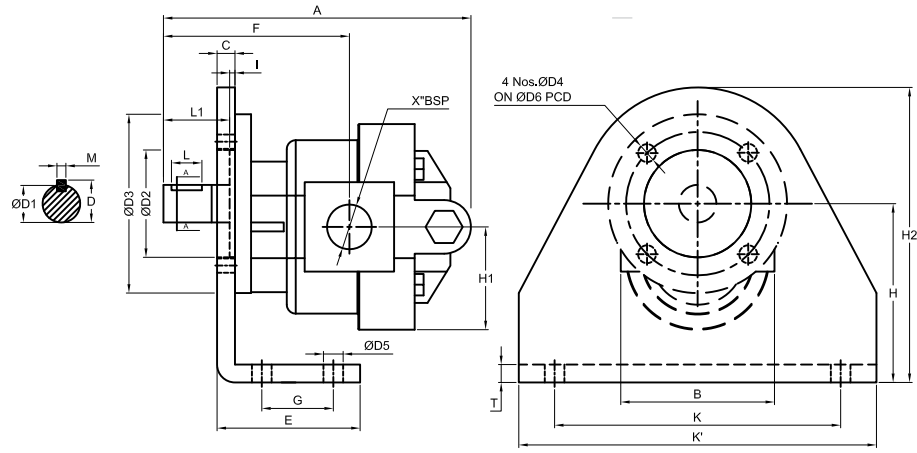
MODELS

Models	SGP 05	SGP 10	SGP 15	SGP 20	SGP 30	SGP 50	SGP 75	SGP 110
Nominal Flow (LPM)	05	10	15	20	30	50	75	110
Motor HP	0.5	0.5	0.75	0.75	1.0	1.5	2.0	3.0

SPECIFICATIONS



Flange Mounted



Foot Mounted

Flange Mounted

Pump Model	MOTOR HP	INLET OUTLET SIZE(BSP)	A	B	AA	BB	C	D	E	F	L	Assembly Weight (Kg)
SGP -05	0.5	¼" x ¼"	112	90	140	115	140	65	190	330	410	10
SGP -10	0.5	½" x ½"	112	90	140	115	140	65	190	330	410	10
SGP -15	0.75	½" x ½"	125	100	157	130	157	65	210	380	460	11
SGP -20	0.75	½" x ½"	125	100	157	130	157	65	210	380	460	15
SGP -30	1	¾" x ¾"	125	100	157	130	157	65	210	380	460	17
SGP -50	1.5	1" x 1"	140	100	173	130	176	70	240	430	500	20
SGP -75	2	1¼" x 1¼"	140	125	173	155	176	70	240	465	550	21
SGP -110	3	1½" x 1½"	160	140	196	180	197	75	260	520	610	35

Foot Mounted

PUMP MODEL	A	B	C	D	ØD1	ØD2	ØD3	ØD4	ØD5	ØD6	I	M	L	L1	F	E	G	K	K'	H	H1	H2	T	X
SGPF-05	144	67	8.5	10.5	9.5	45	72	5.5	11	59	3	3	18	32	77.5	80	40	112	140	71	35	107	10	¼"
SGPF-10	175	71	6.5	13.6	12	52	82	8.5	11	66	3	4	22	43	96.2	80	40	125	160	80	43	120	10	½"
SGPF-15	173	71	6.5	13.6	12	52	82	8.5	11	66	3	4	22	43	94.5	80	40	125	160	80	41	120	10	½"
SGPF-20	174	71	7.5	13.6	12	52	82	8	11	66	3	4	22	43	94	80	40	125	160	80	42.85	120	10	½"
SGPF-30	174	81	8.5	16.5	14	60	100	10.5	11	66	3	5	21.5	40.5	110.85	80	40	140	180	80	51.15	130	10	¾"
SGPF-50	183	88	8	19.5	17	60	100	8.5	11	80	3	5	24.5	39	107.85	80	40	140	180	90	59	140	10	1"
SGPF-75	198.5	98	9	23	20	70	110	9.5	11	90	3	6	28	39	114.6	80	40	140	180	90	58	145	10	1¼"
SGPF-110	221	110	9.5	25	22	75	120	11.5	11	98	4	6	32	39	127.15	80	40	160	200	100	71	160	10	1½"

*** Note : Maximum Working Pressure 10 Kg/cm²**



ENGINE CARE SYSTEMS

Unit 12 Mudgeeraba Industrial Park,
30 Mudgeeraba Rd. Gold Coast QLD 4213 Australia
Parts: 1300 774662 (SPINNA) Bus.:61 7 55305455 Fax: 7 55306300
Email : parts@enginecare.com.au Web.: www.enginecare.com.au

